




Trail Crew Alumni Association Update

Updates for alumni and current crew.

March 2017

<p>Contents</p> <p>TCA Web site</p> <p>Annual Reunion</p>
--

<p>Quick Links</p> <p>Website</p>
--

 <p>Ben English</p>



Trail Crew Adventures...

During the 1950s (and later, I presume) the Trail Crew had seven choices of movie locations that were within easy driving (or walking) distance from Hutton Lodge in Whitefield. These choices included three drive-ins and four "movie houses." We were frequent patrons at these theaters on our Thursday and/or Friday evenings. The drive-ins were in Gorham, Twin Mountain, and Bethlehem.

The Gorham drive-in was located on Route 2 partway up Gorham Hill about a mile west of the junction of Routes 2 and 16. We did not go there very often. The site is now filled with trees and some houses.

The Twin Mountain drive-in was located off Route 3, about a half-mile south of the junction of Routes 3 and 302. One evening we decided to go to Twin Mountain using the 1951 Willys pick-up truck. The driver and passenger were in the front and a couple of guys were lying under a pile of sleeping bags and tools in the back of the truck. We stopped at the ticket booth, and the driver bought two tickets. We then proceeded to the back row of vehicles that were all lined up for the show to begin. The truck was parked facing the bushes behind the last row of cars and with the bed of the truck facing the large screen. The two guys from the front seat got out and climbed into the back, and we all enjoyed the evening while sitting on the sleeping bags. The current airport at Twin Mountain uses the site of the drive-in as part of its runway.



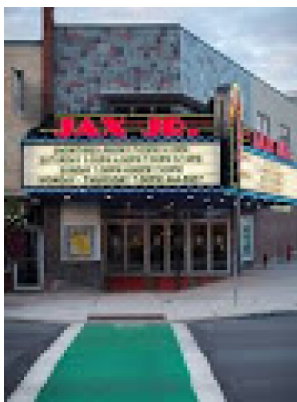
What we called the Littleton drive-in was physically in Bethlehem, but because it was on the road (Route 116) to Littleton, that is what we called it. I have forgotten its real name. It is now the location of a woodchip mill or a biomass plant.

The indoor theaters were in Whitefield, Lancaster, Littleton, and Bethlehem. The Whitefield theater was located in downtown Whitefield, right beside the Main Street bridge over the John's River. Alan McLean and I arrived at Hutton Lodge on Saturday, June 23, 1956, both as first-years. Nobody else was there, but we did find a note from Joel Nichols, Trailmaster. He had written that he would see us the next morning. Alan and I found some food in the kitchen and then decided to go to the movies. We walked down the hill to the center of Whitefield and over to the theater. The movie was entitled, "**I was a Teenage Werewolf.**" I think it was what was known as a horror movie. The theater now houses the offices of the Town of Whitefield.

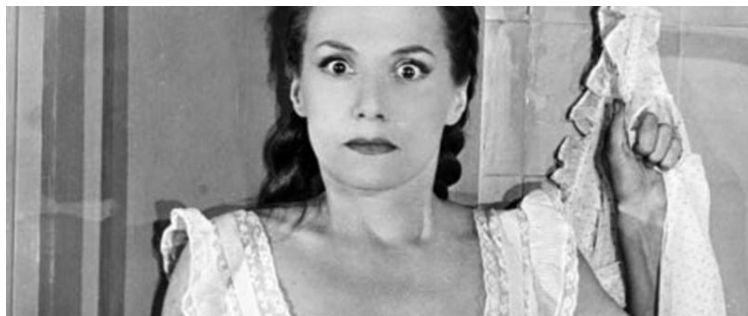
I don't remember the name of the theater in Lancaster, but it was on Main Street. One night a bunch of us went up the nine miles to Lancaster. We sat in the front row of the balcony and hung our legs over the front railing with our feet swinging around. As I remember it, we often banged our heels against the bottom of the railing. An usher had to speak to us several times and threatened to kick us out of the theater if we were not quiet. Fortunately, our boots stayed on and did not drop down onto patrons sitting below us. One movie we watched in Lancaster was "**Diabolique**", a thriller.



Rialto Theatre-
Lancaster NH
Is this it Ben?

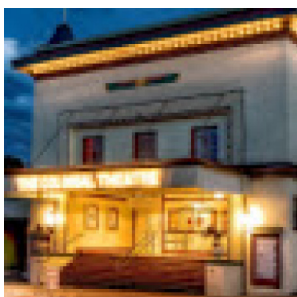


JAX JR. Theatre-
Littleton NH



I do not know if that theater is still in operation or not.

The theater in Littleton is still in business. It was (and is) located on Main Street and is named the Jax Jr. It was quite popular with us, but I don't have any memory of a particular incident there. The Colonial was (and is) the name of the Bethlehem theater located on Main Street. I have no story about our attending there. It is open during the



Colonial Theatre-
Bethlehem NH

summer for cultural events.

If you folks have stories about any of these great theaters, please add them in the near future.

--Ben English
Trail Crew 1956-58

Dave Carlson (Guyot '91/TFC '92) writes...

Life continues to be an adventure of one sort or another. I have a beautiful wife (Jess) and 22 year old son (Ivan). Since 1996, I've been working for the State of Connecticut in Child Protective Services. In 2003, I started the New London County Rugby Club, which is still going strong. In 2013, I got certified as a yoga instructor, after 200 hours of course work. My life is really quite awesome. I love my family and they love me. I recently re-connected with Flyboy and Matt Corbett. Would love to hear from more folks! Give me a call at 860-501-8602.

**Annual Reunion - Mark your Calendar!
Saturday, November 11th, 2017**



It's not too early to make a reservation at Joe Dodge Lodge -
Group Reservation # 348887
Call Pinkham at 603/466-2727.
Room rate (bunk room) is \$58 pp/night includes dinner and breakfast.

Do you have dreams of being a writer?
Do you have a Trail Crew story you just have to share?
Soliciting articles for this newsletter and Chips & Clippings!
Contact Barbara Whiton at bwhiton@maine.rr.com

Please pay your dues today!

P.O. Box 100
Washington, VT 05675
www.amctca.org

If you have already sent your dues or paid on-line, Thank you!



AMC Trail Crew | P.O. Box 100 | Washington | VT | 05675